

Audi Shifter Paddle Install [Shown on Audi A1 GB]

STEP 1: Prepare the Paddles

Optionally, prior to the install we recommend painting the paddles and adding details such as the “+” and “-” symbols in white or red. For painting the paddles, ensure to use only thin coats of primer and paint as adding too much will cause the paddles to not click properly. To add color to the “+” and “-” symbols, a syringe or thin paint brush can be used to fill the recesses.



STEP 2: Tools

For the install, we recommend having the following tools at hand:

- A selection of screwdrivers
- Plastic prying tools
- Pliers
- Ratchet with 10mm socket, depending on battery clamping mechanism.



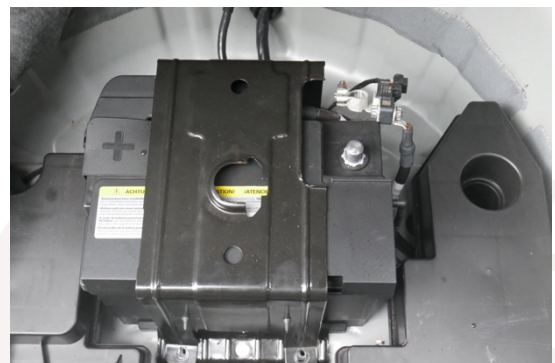
STEP 3: Turn the Steering Wheel

Before the next step, make sure the steering wheel is in a 90-degree rotation.



STEP 4: Disconnect the Battery

Before starting the install, make sure to disconnect the battery at the negative terminal, ensure the car is unlocked and the steering lock is not active. Once disconnected, move the vehicle keys at least 10 meters away and wait 10 minutes before starting the install to ensure no residual current is present which could trigger the airbag.



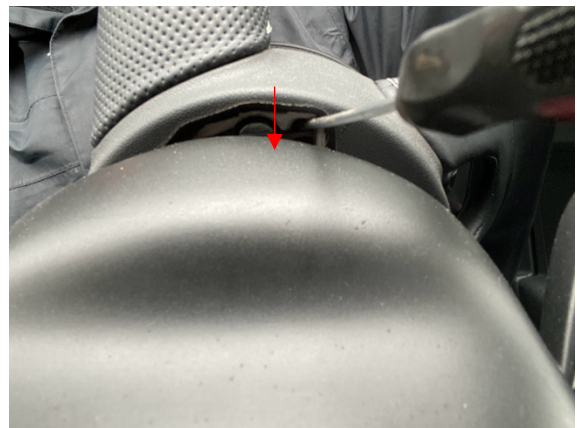
STEP 5: Removing the Airbag

Now, use a mirror or phone selfie camera to look behind the steering wheel. There will be a metal clip that needs to be pushed to release the airbag clamp, for this use a thin flat hat screwdriver as shown on the right.

The screwdriver needs to push down the clip as indicated with the arrow. Whilst doing this, try to move the airbag assembly towards you. When correctly done, the airbag assembly will pop out slightly on one side.

Turn the steering wheel 180 degrees and perform the same operation again to fully release the airbag. (Note: it will take some force to move the steering wheel, this is fine)

Once complete the full airbag assembly will pop out as shown to the right.



STEP 6: Disconnecting Wiring

Disconnect the wiring to the airbag, as shown on the right. Pull the white part of the clip towards you and the connector should pop out. Unclip the black connector carefully.



STEP 7: Removing Plastic Trim

Using the plastic prying tool remove the gloss black trim from the steering wheel. Be careful not to apply too much force as this could break the trim otherwise – follow the images shown on the right.

Start at the bottom side of the button control to remove the trim.

Then move to the upper part of the control buttons and unclip the trim from there.

Do this on both sides and then move to the center section to remove the trim.

Finally, carefully unclip the trim from the bottom part of the steering wheel.

The trim, including the button, should now be removable.



Make sure to unplug the electrical connectors to the paddles on both sides!



STEP 8: Removing the Paddles

With the plastic trim removed, undo the small screw of the paddle shifter as shown on the right and remove the paddle shifter assembly.

***STEP 9: Changing the Paddles***

With the paddle shifter assembly removed, put it aside.

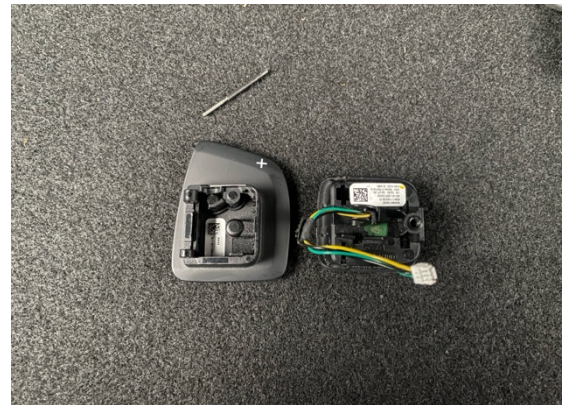
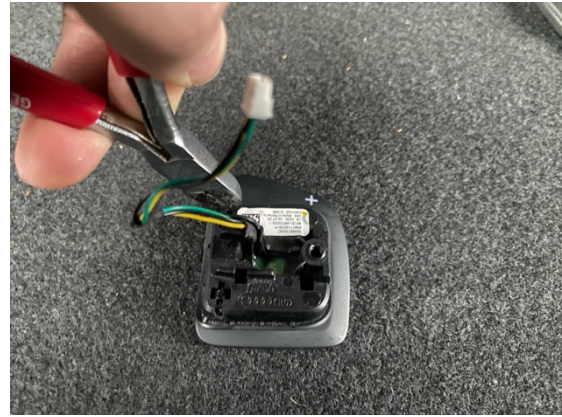


Remove the small aluminium pin using a thin screwdriver or a pair of pliers, as shown on the right.



Once the small pin is slightly out, pull it out fully using pliers.

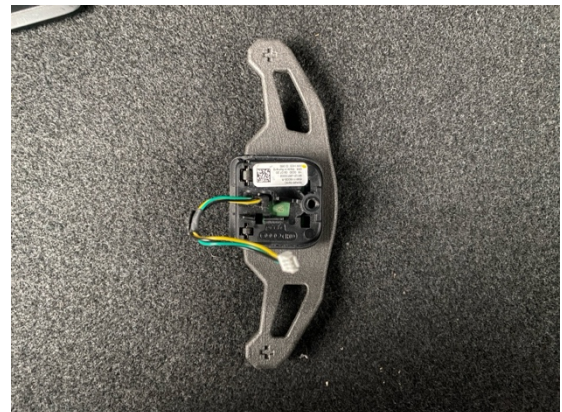
Once the pin is fully out, carefully separate the paddle shifter from the bracket it sits in. Note the orientation in which this pin came out as it needs to be reinstalled in the same orientation. Be careful not to lose the small yellow silicon spring.



Now take the new paddle and place it in the shifter paddle bracket, be careful to install the small silicon spring correctly. Then use force to push the aluminium pin back into place in the correct orientation.

Do this for both sides.

With this complete, follow the earlier steps in reverse order to reassemble the steering wheel. Make sure to reconnect all electrical connectors!



INSTALL COMPLETE